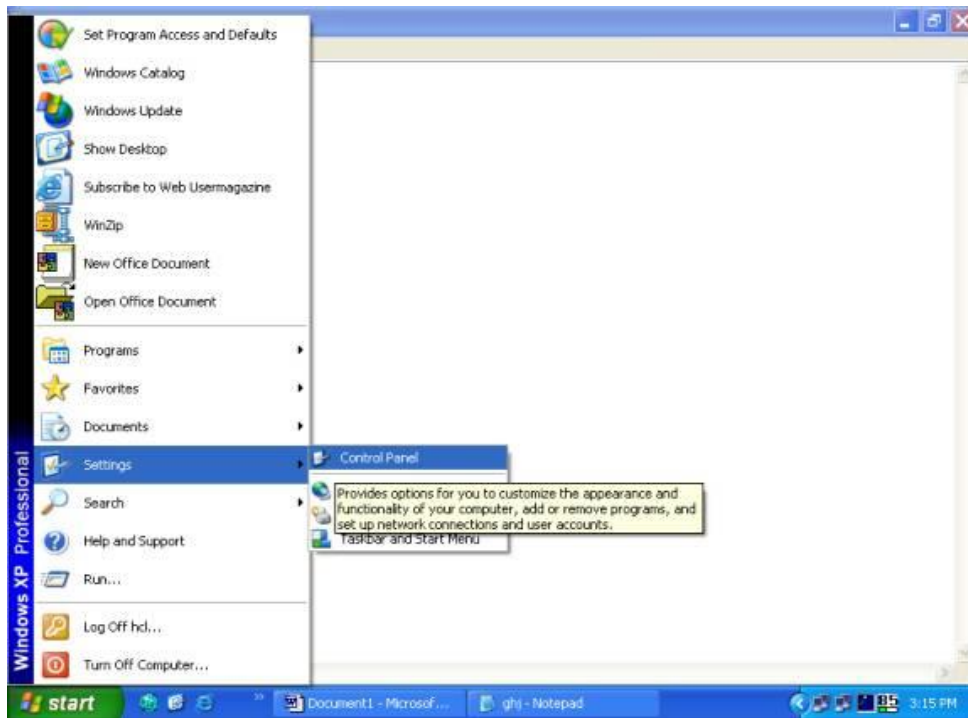


## Steps to Configure Broadband Dialer

### **A. Creation of dialer in PC (only for Windows XP): Step 1 to Step 11.**

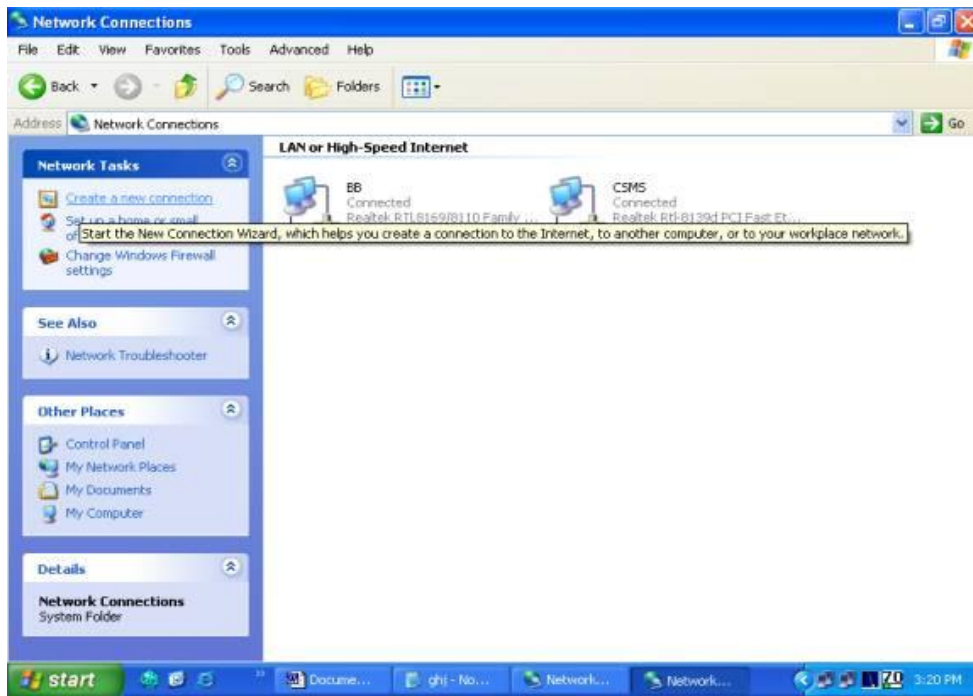
**Step 1.** Click on Start , Select Setting, Control Panel



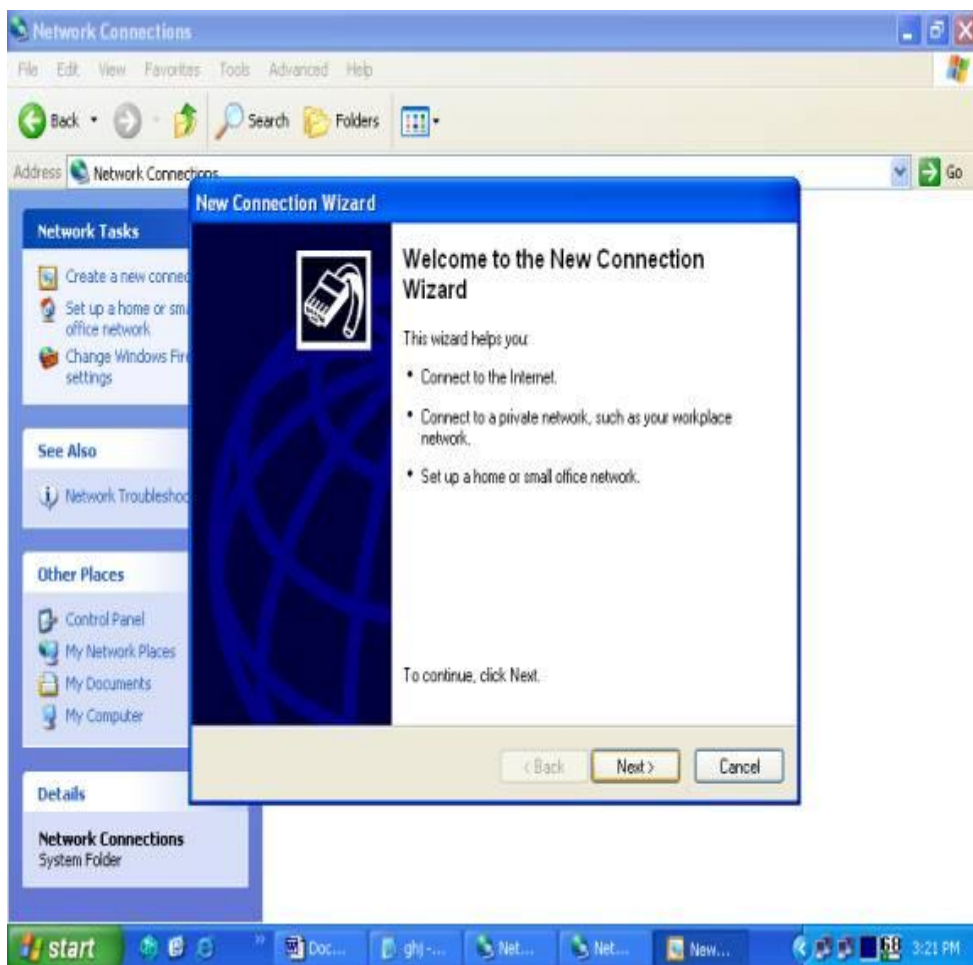
**Step 2 .** Double Click on Network Connections



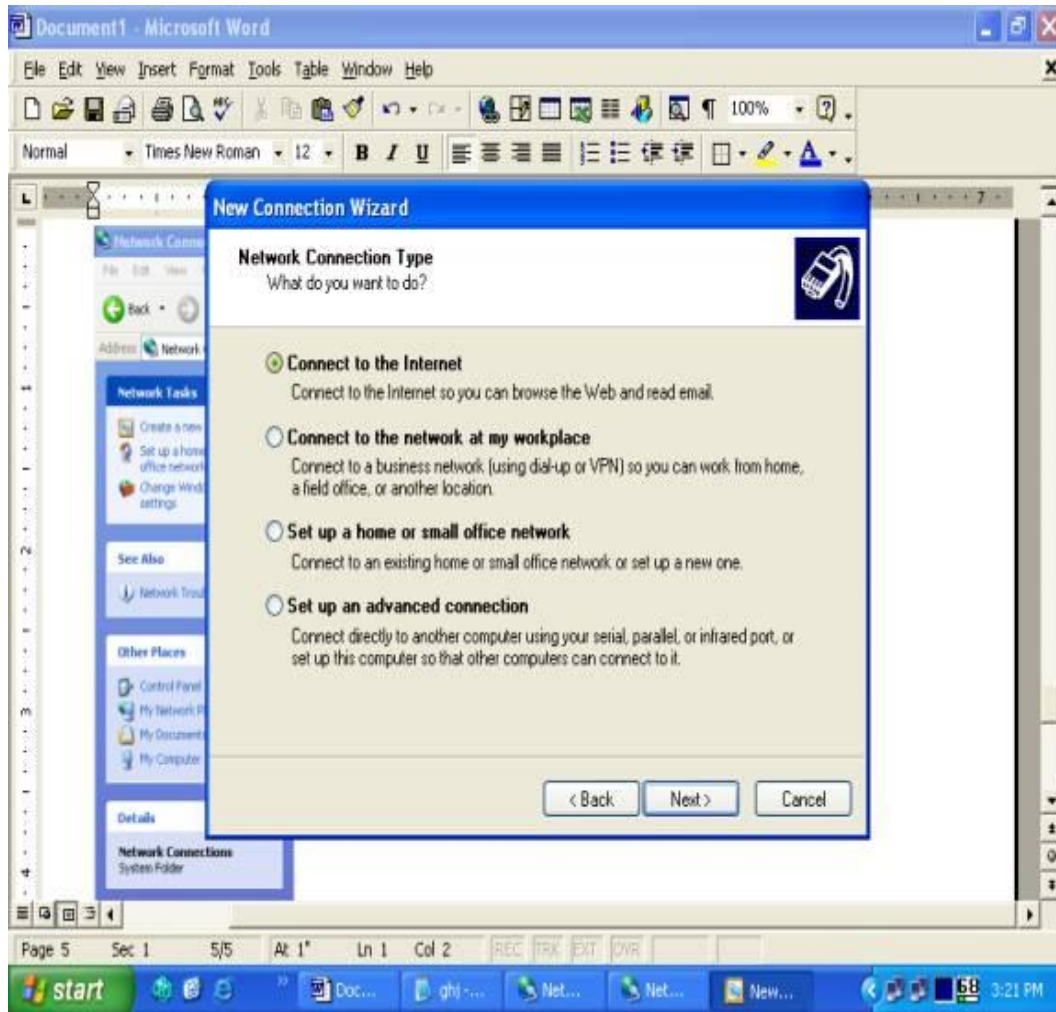
**Step 3 .** Click on Create a New Connection



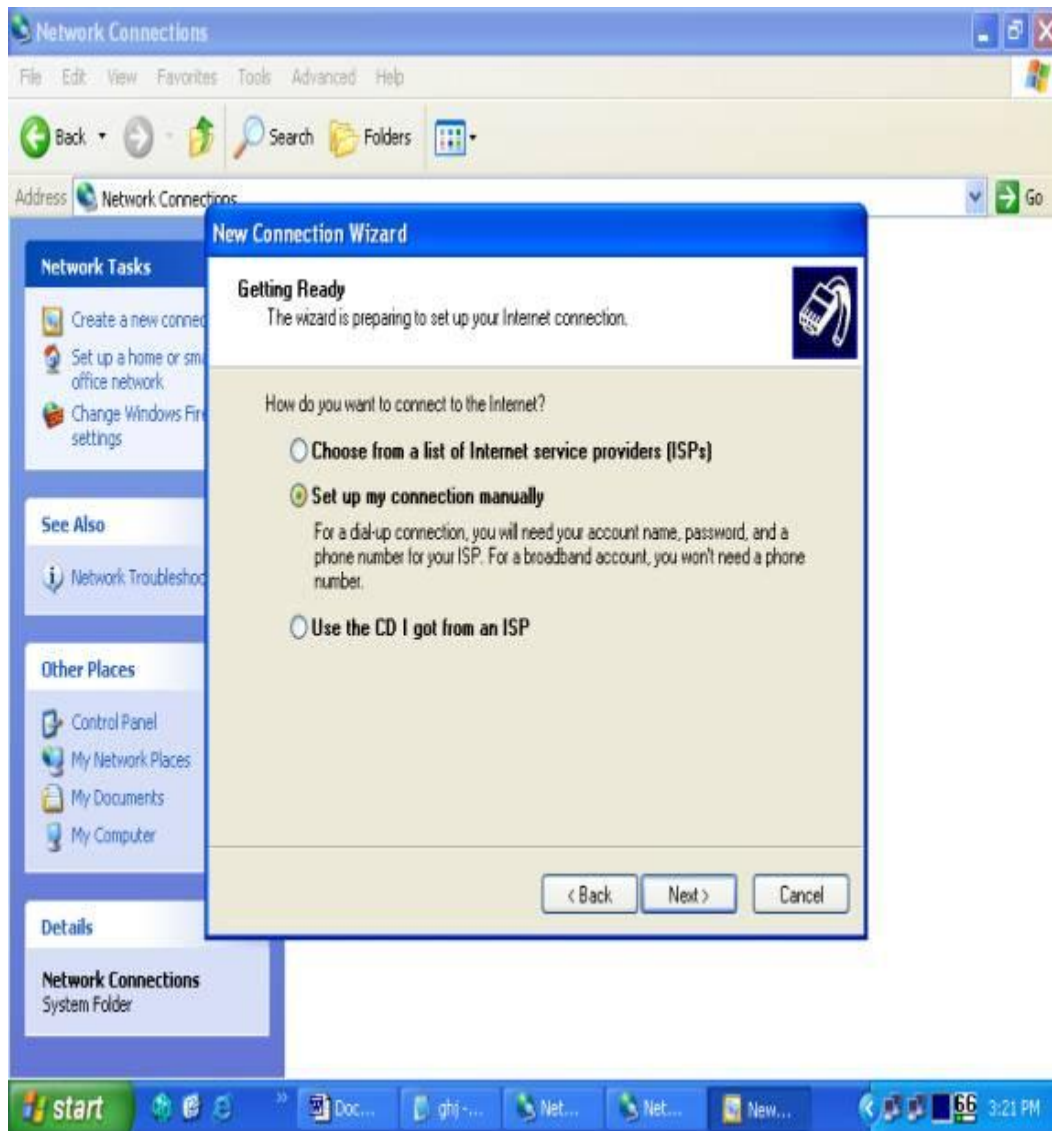
**Step 4** . Click Next on Welcome to New Connection Wizard Screen



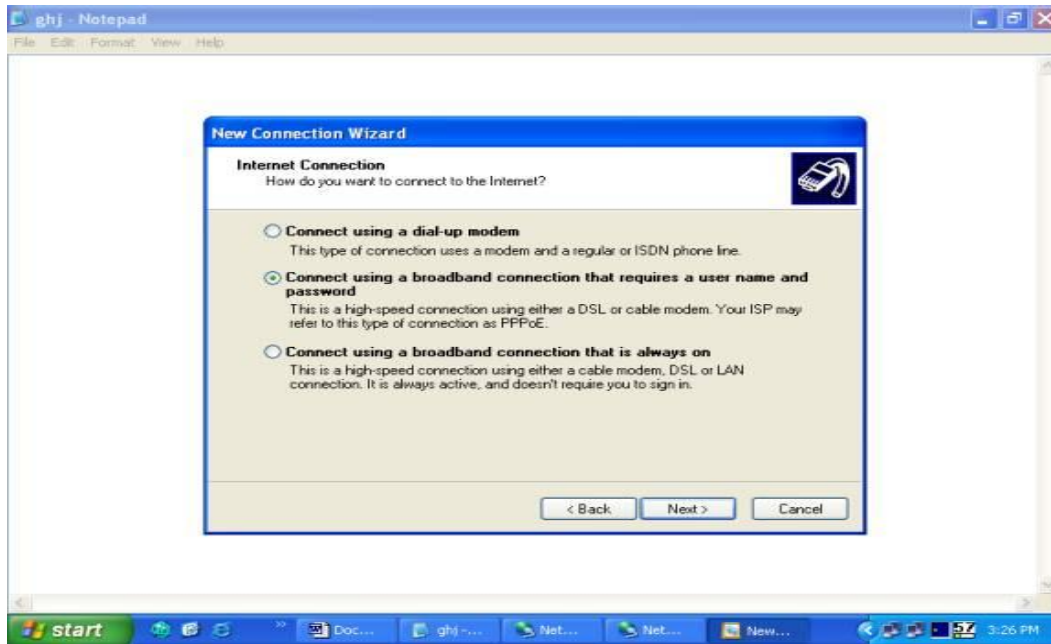
**Step 5** . Select Connect to the Internet, and Click NEXT



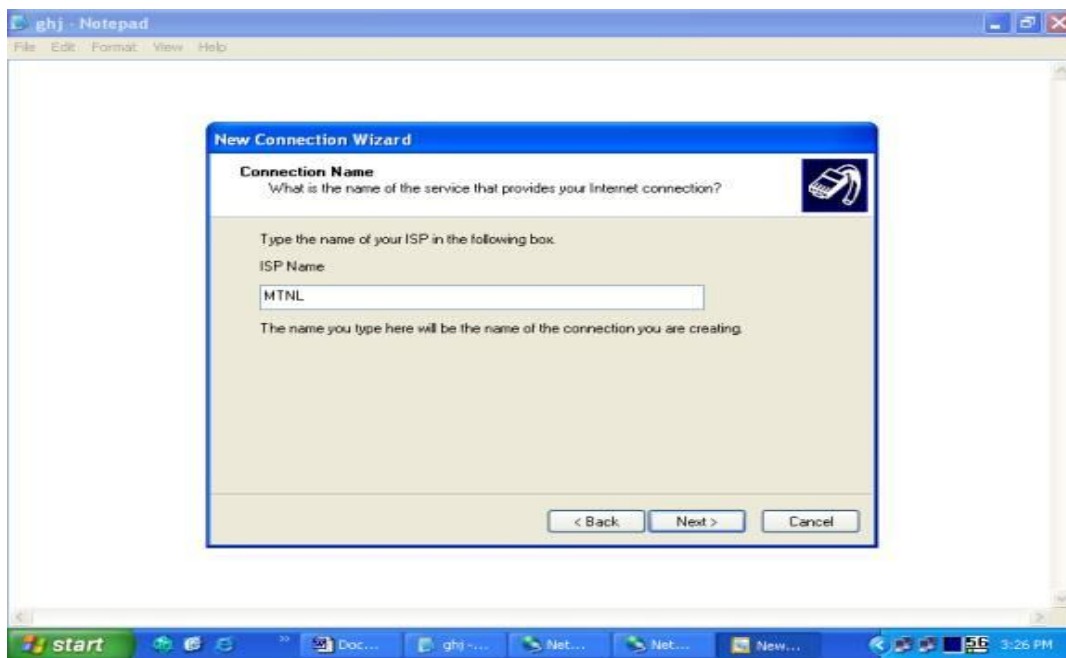
**Step 6** . Select Setup My Connection Manually, and Click NEXT



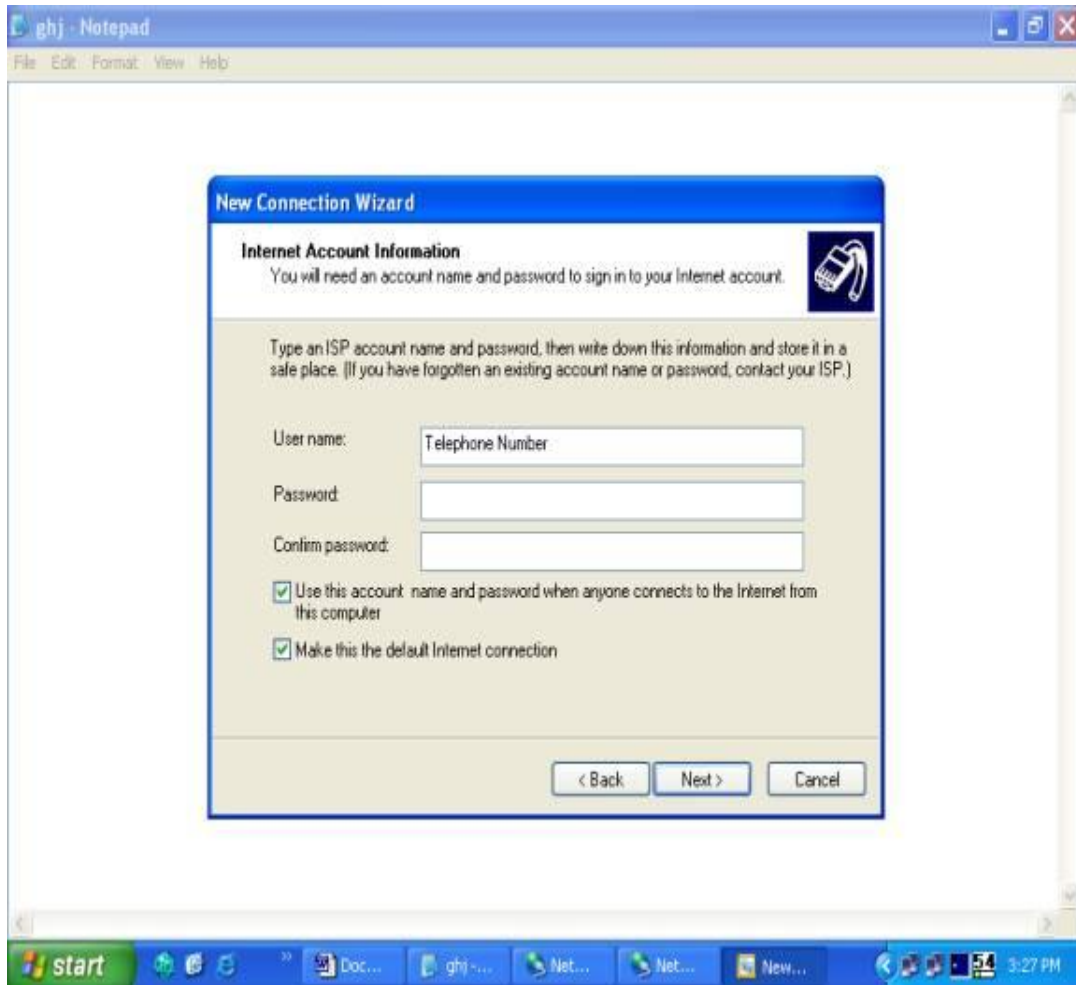
**Step 7** . Select Connect using a Broadband Connection that require a User Name & Password , and Click NEXT



**Step 8** . Give ISP Name MTNL, and Click NEXT



**Step 9** . Give User Name (Telephone Number on which you have broadband connection) and Password. For new connections, the password is the C.A. Number of the telephone. Enter the password again to confirm password. Click NEXT

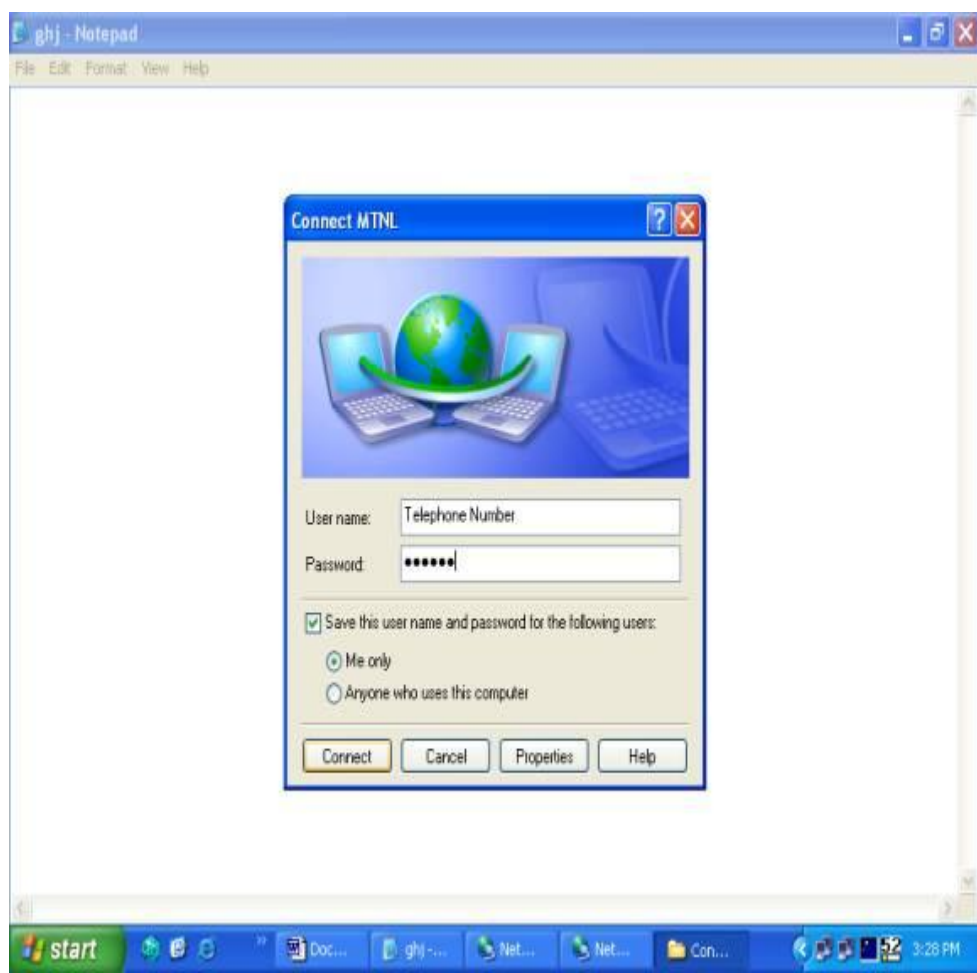




**Step 10** . Click the Finish



**Step 11** .  
Shortcut Dialer  
will be created  
on the Desktop  
with a Name  
MTNL,  
Double Click on  
Dialer & Click  
Connect



B: Configuration of CPE (Modem- D-Link make): Step 12 to Step 14.

**Step 12:**

i. Open your web browser like Internet explorer and open the web page <http://192.168.1.1> from your own broadband connection to login into your ADSL Router/Modem(CPE).

ii. **Logon** using user name as **admin** and Password also as **admin**. Then a new page **ADSL Router** will appear as shown below:



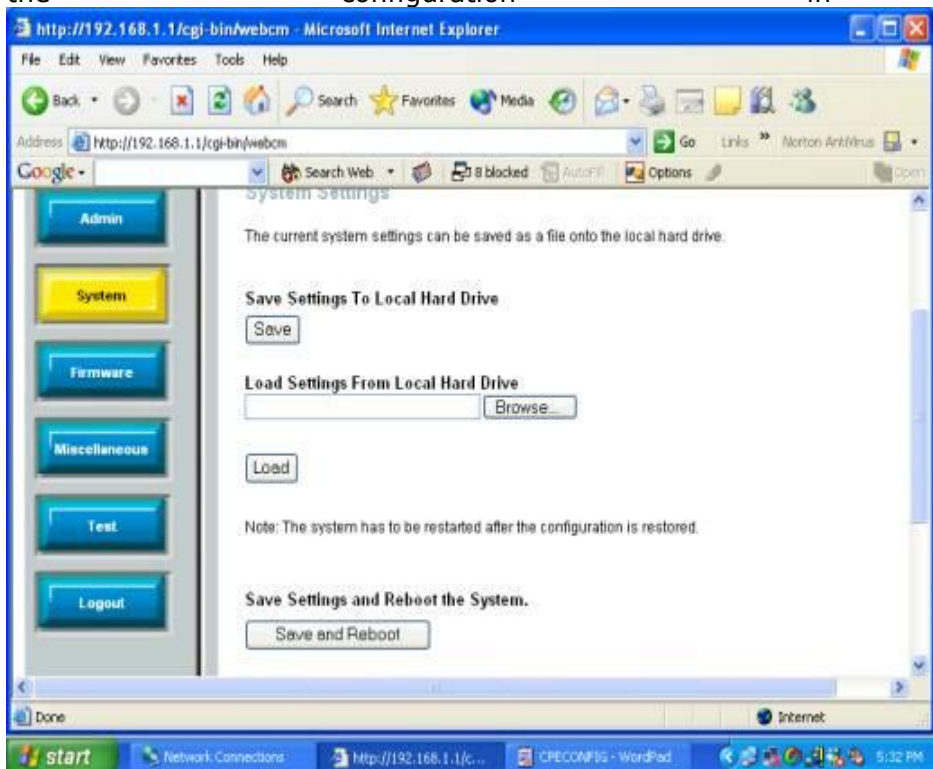
**Step 13:** Click on WAN tab. Click on WAN setting and select Bridge Mode and Apply.





**Step 14:** To save the configuration in the CPE

1. At the top of the screen, click on the **Tools** Tab and
2. Click on the System Button.
3. Scroll to the bottom of the page and click on Save and Reboot button to save the configuration in CPE.



click save and Reboot button as shown above.

**4. A message for restart will appear as shown below:**

Click OK button in Save and Reboot Message box.



It may take 40-45 seconds to reboot. Now configuration in CPE will be saved.

At this time, **◆Page can not be displayed◆** message will appear in the web page and the ADSL Lamp on your ADSL router/Modem (CPE) will go off. Close the Internet Explorer/ Internet Browser. **Wait for 2 to3 minutes till ADSL Lamp on the ADSL Router glows again and become stable.**

**This Completes the configuration of Broadband dialer in PC and CPE/Modem.**

**PLEASE NOTE:** All the customers of Time-Based plans namely TriB TZ and TriB T10 should connect to Internet only through broadband dialer and disconnect the connection immediately after browsing. This is a must for the customers of Time-Based plans (i.e. Hours based plans) to ensure proper billing.