

BB customers having BINATONE Modem may face issue of internet.

Symptom: All lamps are glowing on Binatone modem but not getting Internet.

In such condition please follow the following steps.

Step 1:- Hard Reset the modem:

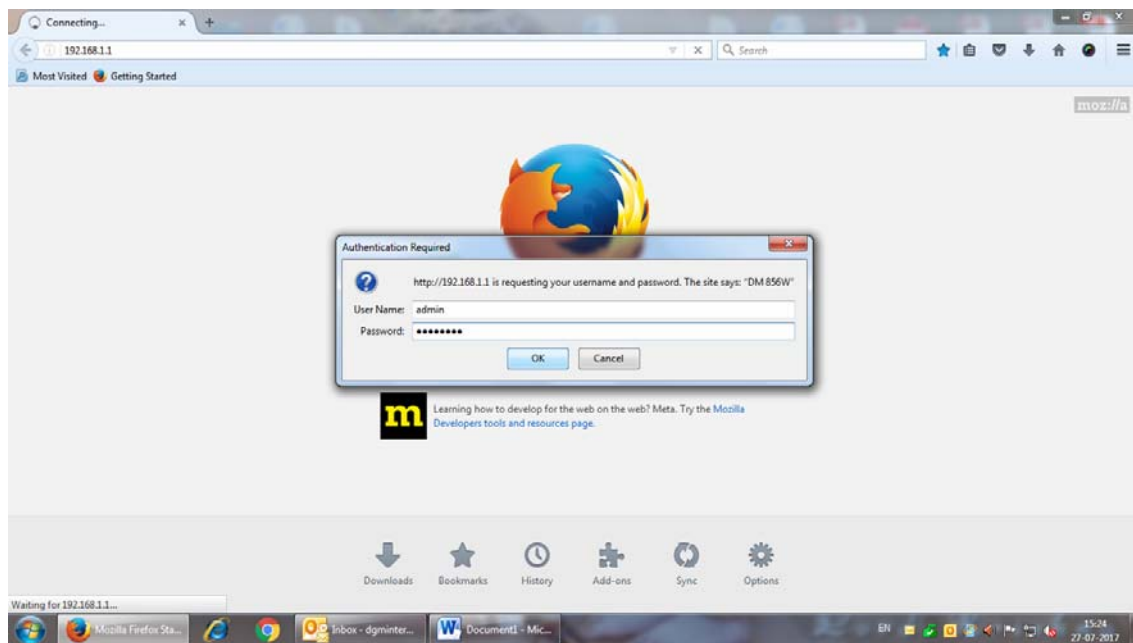
Power supply must be on,

Press the reset button (which is available on right hand rare side of Modem.)& hold till the all lamps will glow.

Wait () for 2 Minutes.

Step 2:- Configure the Modems

Open Modem page by <http://192.168.1.1>

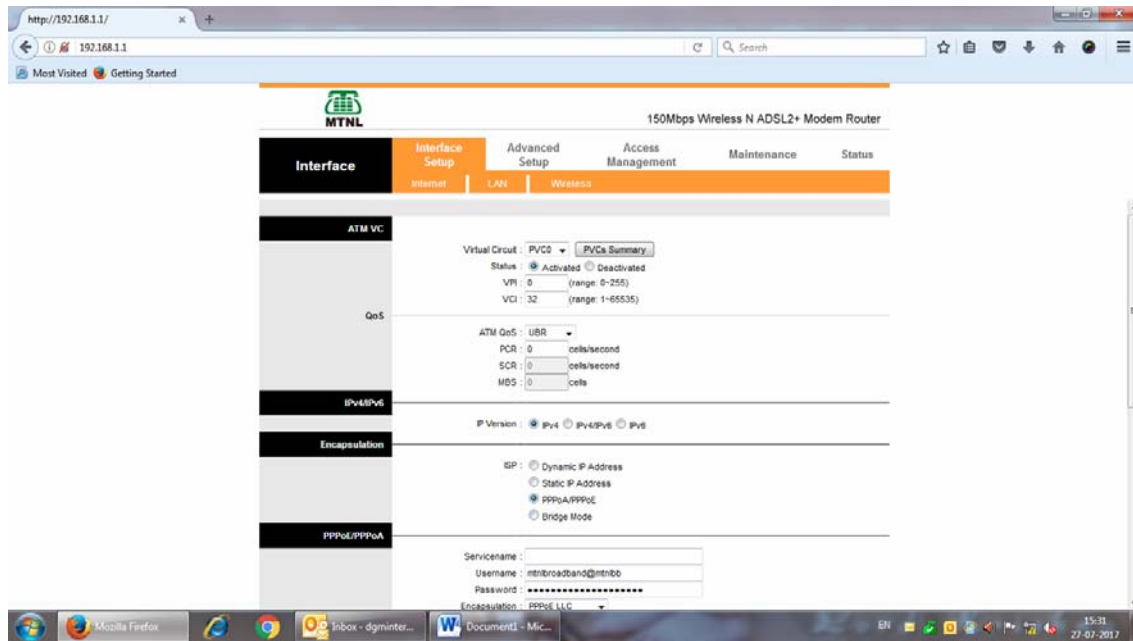


Enter Username - admin & password- available at bottom of modem

then you will get following screen as below-

Click on Internet SetUP

you will get following screen as below-



Configure as,

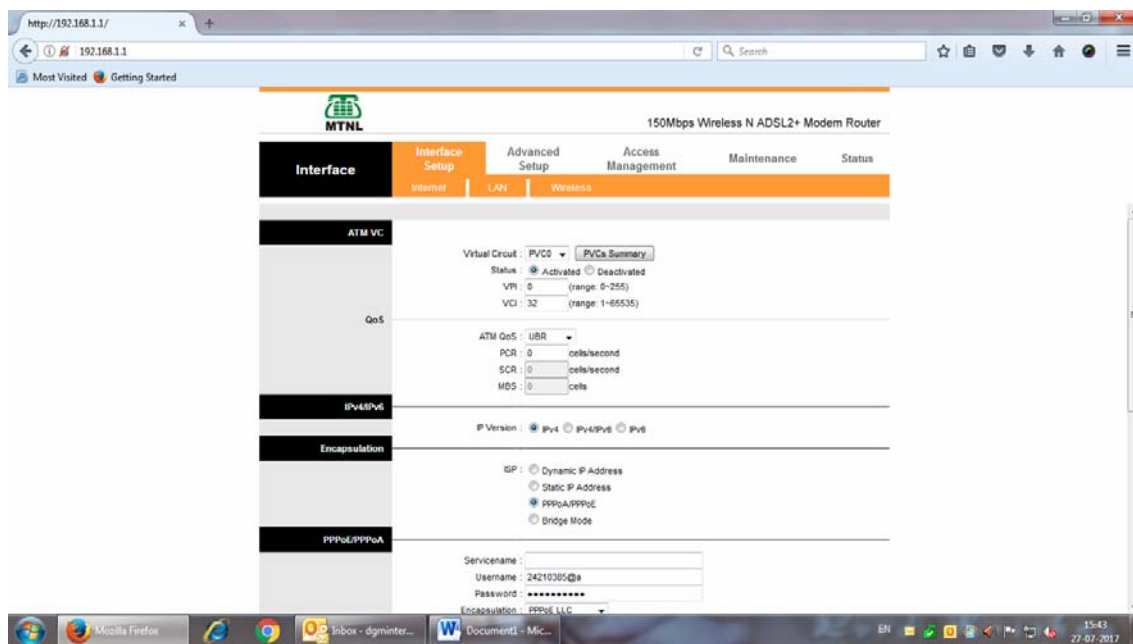
Virtual Circuit – PVC0, status- Activated, VPI = 0 & VCI = 32

If above configuration not match then select

Virtual Circuit - PVC4, Status – Activated, VPI =0 & VCI = 32

Configure Username as "Customer's Tele. No", Password as "CA' NO."

IP version - IP4, Encapsulation – pppoa/PPPoE



Click on SAVE button

Now you should get internet.

For this Click on **Status** Tab you will get the following screen

The screenshot shows the web interface of a MTNL 150Mbps Wireless N ADSL2+ Modem Router. The browser address bar shows 'http://192.168.1.1/'. The page title is '150Mbps Wireless N ADSL2+ Modem Router'. The navigation menu includes 'Status', 'Interface Setup', 'Advanced Setup', 'Access Management', and 'Maintenance'. The 'Status' tab is active, showing a sidebar with 'Device Information', 'LAN', 'WAN', 'IPv6', and 'ADSL'. The main content area displays the following information:

- Device Information:** Firmware Version: DM4W-M1.002-M; MAC Address: 0C:D2:85:2F:F0:84
- LAN:** IP Address: 192.168.1.1; Subnet Mask: 255.255.255.0; DHCP Server: Enabled
- WAN:** A table with columns: PVC, V/PVC, IP Address, Subnet, GateWay, DNS Server, Encapsulation, Status. Data rows: PVC0 (0/32) with IP 120.62.34.27, Subnet 255.255.255.255, GateWay 120.62.32.1, DNS Server 59.185.3.10, Encapsulation PPPoE, Status Up; PVC1 (0/33) with IP N/A, Subnet N/A, GateWay N/A, DNS Server N/A, Encapsulation Bridge, Status Up.
- IPv6:** A table with columns: PVC, V/PVC, IP Address, Prefix Length, Default Gateway, DNS Server, Prefix Delegation, Status. Data rows: PVC0 (0/32) with IP, Prefix Length 0, Default Gateway, DNS Server, Prefix Delegation :/0, Status Down; PVC1 (0/33) with IP, Prefix Length 0, Default Gateway, DNS Server, Prefix Delegation :/0, Status Down.
- ADSL:** ADSL Firmware Version: FwVer:3.20.17.0_TC3087 HwVer:T14_FT_11.2; Line State: Showtime; Modulation: ADSL2 PLUS; Annex Mode: ANNEK_A

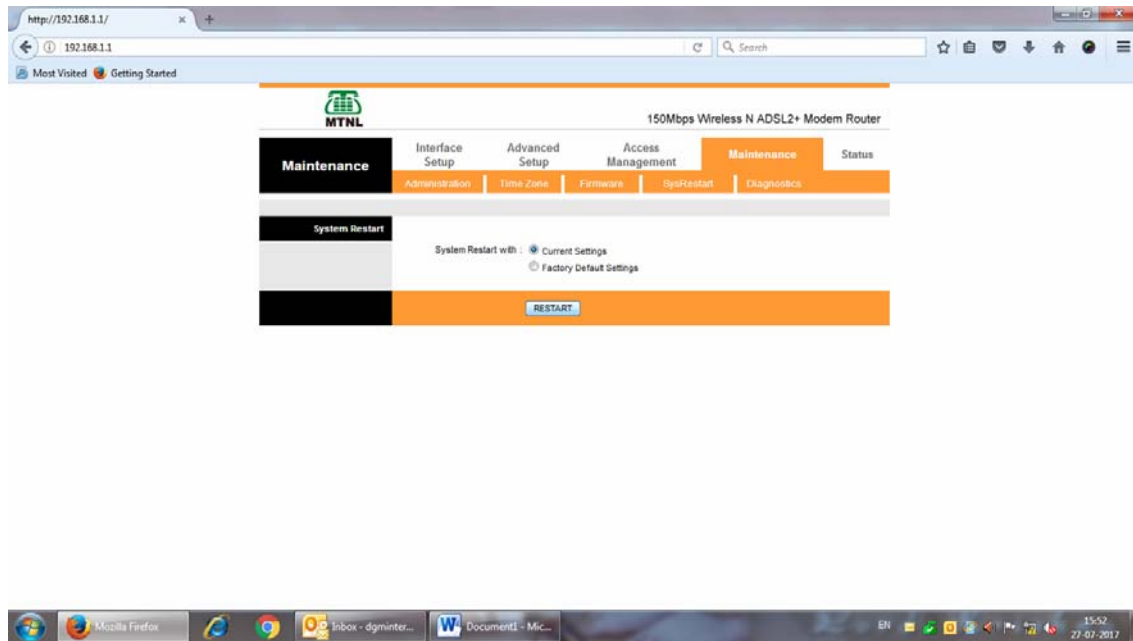
To save the modem configuration

Click on **Maintenance** Tab

The screenshot shows the web interface of a MTNL 150Mbps Wireless N ADSL2+ Modem Router. The browser address bar shows 'http://192.168.1.1/'. The page title is '150Mbps Wireless N ADSL2+ Modem Router'. The navigation menu includes 'Maintenance', 'Interface Setup', 'Advanced Setup', 'Access Management', and 'Status'. The 'Maintenance' tab is active, showing a sidebar with 'Administrator', 'Administration', 'Time Zone', 'Firmware', 'SysRestart', and 'Diagnostics'. The main content area displays the 'Administrator' section with the following information:

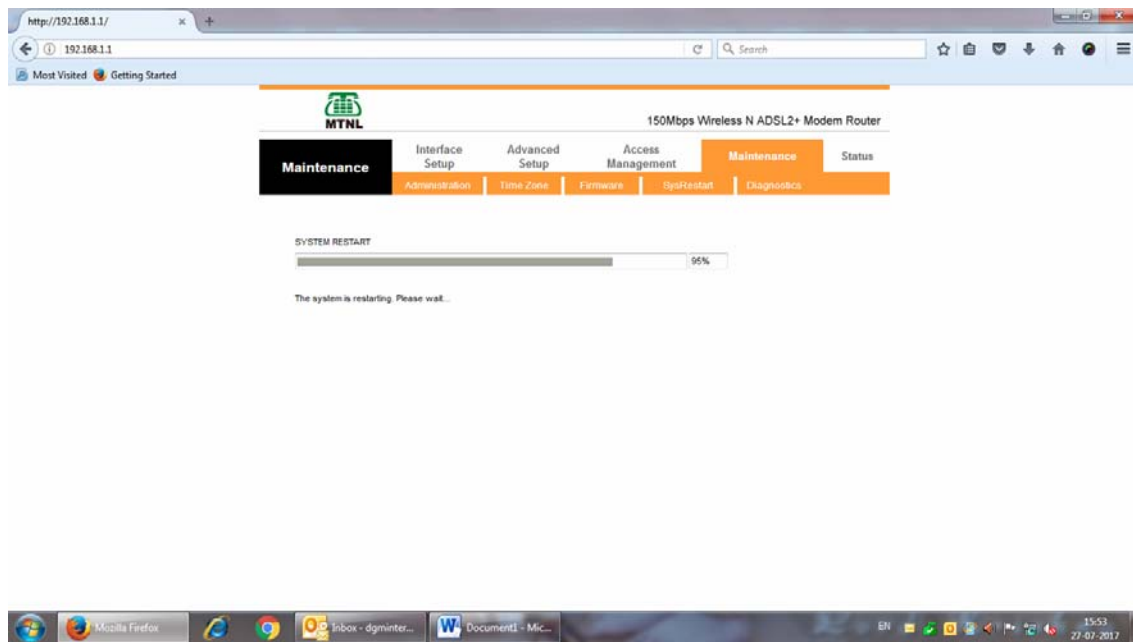
- Administrator:** Username: admin; New Password: [input field]; Confirm Password: [input field]; SAVE; CANCEL

Click on **SysRestart** Tab you will get following screen



Click on Restart Button

Wait () for 2 Minutes



After Resetting the modem you will get Internet.